

Drop Off & Pick Up Procedures

West Ave. Location

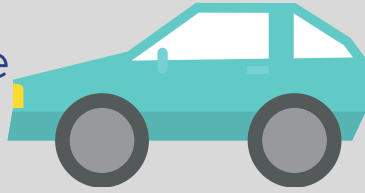


The Arc
of San Antonio

Serving People with Intellectual and Developmental Disabilities

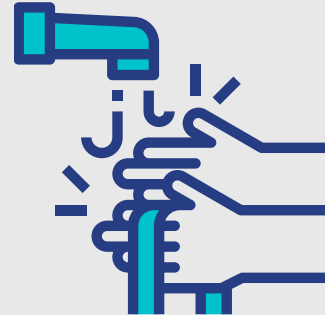
1 Drop off will be located at the back entrance.

Families and Caregivers, please stay in your car.

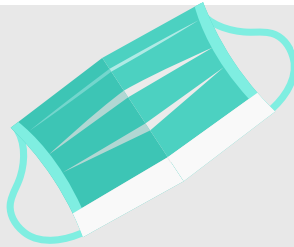


4 Go to your room and wash your hands.

Practice good hand hygiene by washing your hands with soap and water.



2 Put your mask on.



5 Practice social distancing.

We are practicing social distancing at The Arc of San Antonio locations.



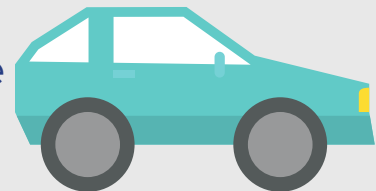
3 Your temperature will be checked and a mini-health screening will be conducted while you remain in the car.



Anyone with a temperature over 99.6 will not be allowed in the building.

6 Pick up will be located at the back entrance of the building.

Families and Caregivers, please stay in your car.



The Arc of San Antonio | 13430 West Ave. San Antonio, TX 78216
210-4904300 | arc-sa.org